



World Food Programme

Issue No. 33
October 2022

IRAQ Market Monitor Report

© WFP

Highlights

- Iraq is entering into a third consecutive drought year.
- With a second year of crop failure in rainfed areas, Iraq was able to produce only 2.7 million tons of wheat from irrigated areas during agriculture year 2021-22.
- The prices of essential food commodities were generally stable, primarily because of regular PDS distributions.
- The oil revenue for Iraq during October was around USD9.2 billion.

Iraq is entering into a third consecutive drought year. Low rainfall in the Tigris-Euphrates River basin, damming and diverting water in the riparian countries, poor water management and excessive use of water at farm and domestic level, is contributing to water scarcity in Iraq. To prioritize the water for drinking, government implemented a 50 percent reduced agricultural plan for the strategic crops during 2021-22. The reduced plan lead to a low wheat production in the irrigated areas. While, low rainfall in rainfed areas resulted in second consecutive crop failure.

During agricultural year 2021-22, Iraq was able to produce around 2.7 million tons of wheat. This was 36 percent lower compared to previous drought year (2020-21) production (4.2million tons) and 56 percent lower compared to the year before (2019-20), when the wheat production reached 6.2 million tons. The situation of water availability worsened even more over the past year. For the cropping year 2022-23, the government

is aiming to plant around 1.5 million dunam through irrigation compared to 3.9 million dunam planted during 2021-22 and around 2.5 million dunam through rainfed compared to 3.5 million dunam planted during 2021-22. The rainfall during November was positively received by farmers. It provided the most needed soil moisture, though only in certain areas. Government might consider revising the agriculture plan.

The areas of IDP return, especially Nainawa governorates, are primarily relying on rainfed agriculture and livestock keeping. The reduced rainfall is not providing a conducive environment for a sustainable return. Climate induced displacements are already triggered in different governorates like Nainawa.

With the reduced inflows to the Shat-al-Arab, the whole marshland eco-system is negatively impacted. The drought conditions has already triggered internal migration from rural to urban areas in southern Iraq.

Contacts

Ally-Raza Qureshi
ally-raza.qureshi@wfp.org

Fawad Raza
fawad.raza@wfp.org

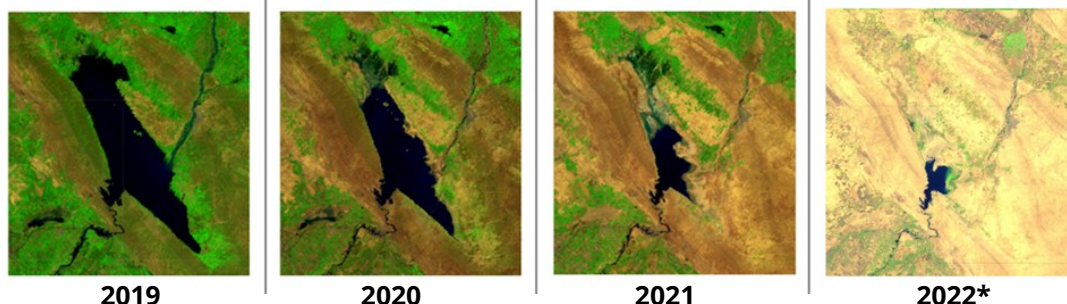


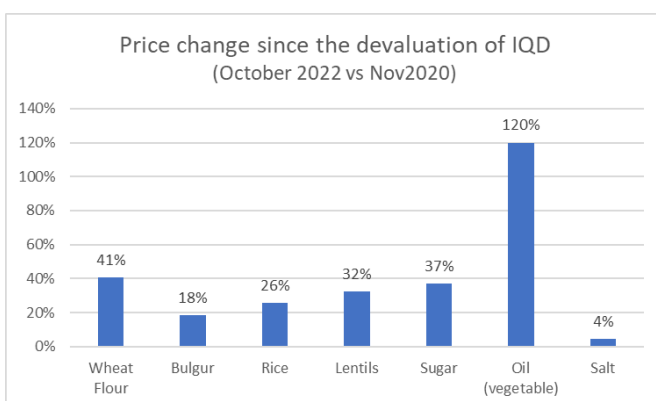
Figure 1: Sentinel 2 satellite images of Hamrin Lake during March-April.
*The image is from October 2022

Food Prices

Ukraine-Russia crisis continue to impact global food supply. The food prices increased in the global markets due to demand and supply imbalance. The FAO Cereal Price Index averaged 152.3 points in October, up 4.4 points (3 percent) from September and 15.2 points (11.1 percent) above its value a year ago. International reference prices of all the major cereals were up month-on-month. World wheat prices rose by 3.2 percent, mostly reflecting continued uncertainties related to the Black Sea Grain Initiative. The increased import requirement complemented with the globally high food prices is taking a high toll on Iraqi national expenditure on food.

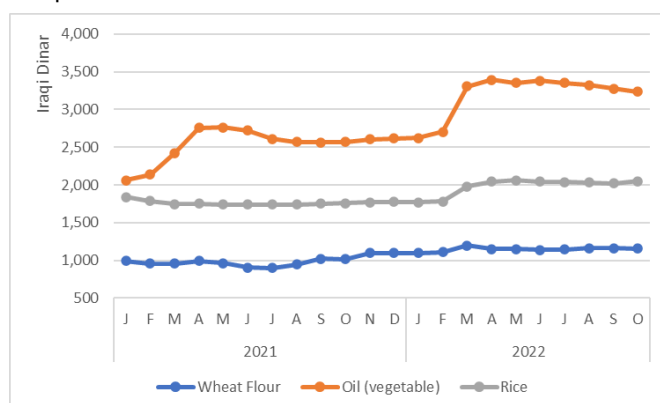
WFP's food security analysis and hunger monitoring team is collecting retail prices data of 35 essential food and non-food items from all the governorates in Iraq. The national average of essential food commodities like wheat flour, vegetable oil and rice, doesn't show any significant month-on-month changes. However year-on-year (YoY) price comparison shows significant increase among the retail prices of wheat flour (14percent), vegetable oil (26 percent) and rice (17percent).

When comparing the retail prices before the devaluation of Iraqi dinar, the highest increase observed in the retail prices of vegetable oil and wheat flour .



Iraq is a net food importer. The prices of imported items in local market are directly influenced by the changes in the global market prices. Ukraine-Russia crisis, started in February, impacted the global food supply particularly wheat and vegetable oil. Vegetable oil price spike in Iraq during March 2022, demonstrate high correlation with the international prices. The

retail prices in Iraq stabilized quickly though at a higher level. The price increase during February to April 2021 was primarily linked to the devaluation of Iraqi Dinar in December 2020.



The Public Distribution System (PDS) of Iraq greatly contributes to the stability of the prices of essential food items and food security in the country. The universal subsidy program started in 1990 and currently provides six essential food items, monthly. The in-kind basket of the PDS includes wheat flour, rice, vegetable oil, sugar, lentils, and tomato paste. The PDS items are provided according to the family size through food agents. Per person monthly quantities of the PDS food items are provided in a table below.

PDS Item	Quantity
Wheat Flour	9 KG
Rice	3 KG
Sugar	1 KG
Vegetable Oil	1 Litre
Lentils	0.5 Kg
Tomato Paste	200-300g

During the political stalemate, there was no financial instrument to access the available financial resources. Iraqi Parliament passed an Emergency Food Security and Development Law on 8th of June to allocate around 17 billion USD to achieve food security, curb poverty, achieve financial stability particularly in light of global developments and continue providing services to citizens.

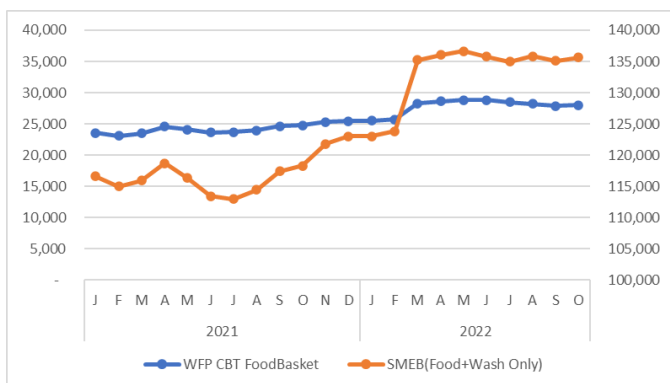
The largest share of the Emergency Food Security Law was allocated to Ministry of Trade (MoT) to pay farmers for domestic wheat procurement as well as importing wheat from the global market.

¹ WFP CBT food basket includes wheat flour, rice, vegetable oil, lentils, salt, sugar, pasta, chicken, vegetables, and milk

² The SMEB includes seven food items (lentil, vegetable oil, rice, sugar, bulgur, salt, wheat flour) and eight non-food WASH items (laundry detergent, sanitary pads, shampoo, soap, toothbrush, tooth paste and garbage bags)

Food Basket Price

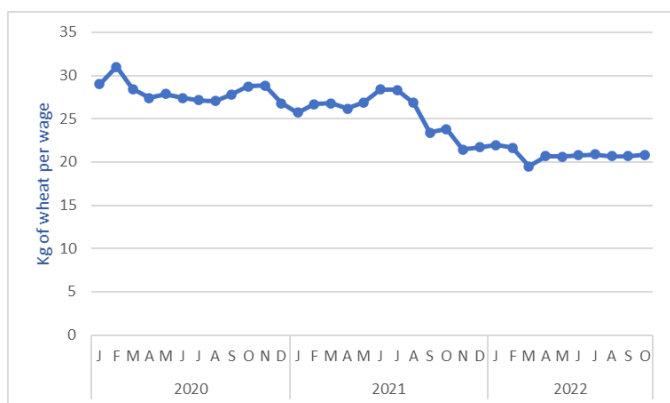
The price of WFP reference food basket for its Cash Based Transfer (CBT)¹ activities increased by 10 percent since the beginning of the year while the YoY increase is 13 percent.



The highest YoY increase in the price of WFP reference basket observed in Salah-Al-Din (28 percent), Muthanna (26 percent), Maysan (24 percent), and Basra (22 percent) governorates.

The price of Food and WASH portion of the Survival Minimum Expenditure Basket (SMEB)² increased by 15 percent compared to same month last year.

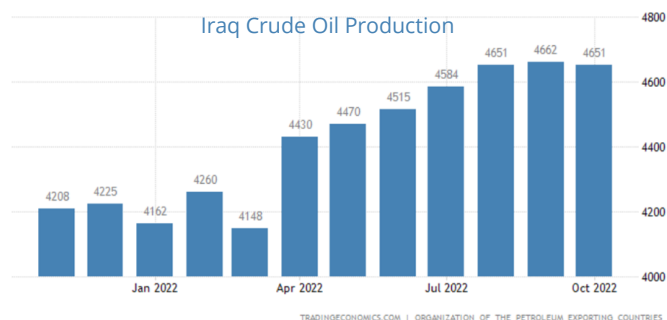
The increasing prices of essential food items and multiple shocks over the past couple of year have significantly eroded the purchasing power of vulnerable families. During the month of October, on average, only 21Kg of wheat flour can be procured with one day of unskilled wage while one could buy 31Kg of wheat flour with the same before COVID19 (February 2020). The highest Year on Year decrease observed in Anbar (25 percent) and Nainawa (20 percent) governorate.



Oil Prices:

Iraq is an oil-based economy. According to recent World Bank estimates, oil revenues have accounted for more than 99 percent of Iraqi exports, 85% of government budget and 42 percent of the Gross Domestic Productivity over past ten years. The increasing oil prices in global market is temporarily helping Iraq to offset the increase in global food prices. However, the high dependency on a single commodity makes it more vulnerable to the global oil price changes. With the global commitments around a reduced carbon footprint by 2030 through a reduced global dependency on fossil fuels, Iraq should take early actions to diversify its economy and reduce its economic dependency on export of oil.

According to OPEC data, crude oil production in Iraq during October was 4.651 million barrels per day which was slightly lower compared to 4.622 million barrels per day during September.



The Ministry of Oil declared that during October the total crude oil export reached 104,831,120 barrels. With a monthly average price of USD88,539 per barrel, Iraq generated over nine billion dollars with the export of oil during October.

WFP Market Price Monitoring

Market price information is collected for 35 different food and non food items, on a weekly basis from all the governorates in Iraq. This includes 23 food commodities, three types of fuel, six non-food items, the wage rate of unskilled laborers and the exchange rate. The data is also accessible from WFP's global data platform (<https://dataviz.vam.wfp.org/>).

¹ WFP CBT food basket includes wheat flour, rice, vegetable oil, lentils, salt, sugar, pasta, chicken, vegetables, and milk

² The SMEB includes seven food items (lentil, vegetable oil, rice, sugar, bulger, salt, wheat flour) and eight non-food WASH items (laundry detergent, sanitary pads, shampoo, soap, toothbrush, tooth paste and garbage bags)

³ PDS provides six essential food commodities including wheat flour, rice, vegetable oil, sugar, pulses, and tomato paste.

Annex 1: Market Prices by Governorates and Commodity

Governorate	Commodities	Current Month	% Change from Previous period			
			1 M	3 M	6 M	1 Yr
Anbar	Beans (white)	2,500	0%	5%	0%	0%
	Bread (khoboz)	200	0%	0%	0%	0%
	Bulgur	1,375	-8%	10%	10%	38%
	Cheese	4,500	13%	13%	13%	13%
	Chickpeas	3,000	0%	0%	14%	20%
	Dates	1,250	4%	25%	11%	25%
	Eggs	206	3%	24%	7%	0%
	Fish (fresh)	6,750	-6%	-33%	-4%	17%
	Fuel (gas)	7,000	0%	0%	0%	0%
	Fuel (kerosene)	750	50%	50%	50%	50%
	Fuel (Super Petrol)	450	0%	0%	0%	-10%
	Lentils	2,000	0%	0%	0%	7%
	Meat (beef)	14,250	2%	2%	16%	43%
	Meat (chicken)	3,563	12%	-13%	-8%	-8%
	Meat (lamb)	15,000	0%	0%	7%	25%
	Milk	1,000	-23%	-27%	-36%	-43%
	Milk (powder)	5,000	0%	0%	0%	0%
	Oil (vegetable)	3,000	0%	0%	-17%	20%
	Onions	813	25%	63%	23%	63%
	Potatoes	800	23%	39%	-33%	28%
Rice	1,750	0%	-3%	0%	17%	
Salt (iodised)	1,750	0%	0%	-3%	75%	
Sugar	1,250	-4%	0%	-5%	25%	
Tea	6,500	0%	0%	0%	0%	
Tomatoes	1,000	54%	78%	-16%	33%	
Wage (casual labour)	25,000	0%	0%	0%	0%	
Wheat flour	800	0%	0%	-20%	-20%	
ToT (Wage/WF)	31	0%	0%	25%	25%	
ToT (Wage/FB)	23	-1%	3%	11%	-2%	
Food Basket	23,501	1%	-3%	-10%	2%	
SMEB	113,288	-1%	0%	-6%	6%	
Baghdad	Beans (white)	2,250	-6%	-10%	-18%	-22%
	Bread (khoboz)	250	0%	0%	5%	25%
	Bulgur	2,000	0%	-14%	-20%	-20%
	Cheese	5,000	0%	0%	0%	0%
	Chickpeas	2,500	0%	3%	0%	0%
	Dates	2,250	0%	0%	0%	0%
	Eggs	250	0%	0%	0%	0%
	Fish (fresh)	7,000	-5%	-13%	8%	30%
	Fuel (gas)	8,000	0%	0%	0%	0%
	Fuel (kerosene)	500	0%	0%	0%	0%
	Fuel (Super Petrol)	450	0%	0%	0%	0%
	Lentils	2,000	0%	-3%	-20%	33%
	Meat (beef)	16,000	0%	0%	0%	0%
	Meat (chicken)	5,500	-10%	-8%	-8%	-14%
	Meat (lamb)	16,000	0%	0%	0%	0%
	Milk	1,750	0%	0%	0%	0%
	Milk (powder)	7,000	0%	0%	0%	0%
	Oil (vegetable)	3,375	-4%	-4%	-4%	35%
	Onions	1,000	0%	33%	0%	7%
	Potatoes	1,000	0%	33%	-27%	0%
Rice	2,250	0%	0%	-10%	50%	
Salt (iodised)	500	0%	0%	0%	0%	
Sugar	1,500	0%	0%	0%	0%	
Tea	8,000	3%	0%	0%	7%	
Tomatoes	1,000	0%	33%	-27%	0%	
Wage (casual labour)	25,000	0%	0%	0%	0%	
Wheat flour	1,500	0%	0%	0%	0%	
ToT (Wage/WF)	17	0%	0%	0%	0%	
ToT (Wage/FB)	17	2%	2%	8%	-12%	
Food Basket	32,468	-2%	-1%	-7%	14%	
SMEB	145,231	0%	-2%	-8%	14%	
Babylon	Beans (white)	2,000	0%	-9%	0%	0%
	Bread (khoboz)	166	0%	0%	0%	0%
	Bulgur	1,250	0%	0%	0%	25%
	Cheese	8,000	0%	0%	0%	33%
	Chickpeas	3,125	-2%	14%	14%	25%
	Dates	1,500	0%	-40%	-25%	50%
	Eggs	196	11%	21%	31%	-10%
	Fish (fresh)	5,500	-10%	-29%	-15%	29%
	Fuel (gas)	6,000	0%	0%	0%	0%
	Fuel (kerosene)	350	0%	-22%	0%	59%
	Fuel (Super Petrol)	450	0%	0%	0%	0%
	Lentils	2,000	0%	0%	0%	33%
	Meat (beef)	14,000	1%	0%	0%	17%
	Meat (chicken)	3,313	4%	-13%	-7%	-4%
	Meat (lamb)	13,000	-2%	0%	0%	8%
	Milk	1,250	19%	25%	25%	25%
	Milk (powder)	4,000	-7%	-11%	-38%	-20%
	Oil (vegetable)	3,125	-11%	-11%	-4%	25%
	Onions	650	0%	0%	30%	0%
	Potatoes	913	-9%	35%	-23%	0%
Rice	1,750	25%	40%	40%	40%	
Salt (iodised)	1,500	0%	0%	0%	0%	
Sugar	1,156	-8%	16%	16%	16%	
Tea	5,000	0%	0%	0%	0%	
Tomatoes	1,125	32%	96%	8%	20%	
Wage (casual labour)	25,000	0%	0%	0%	0%	
Wheat flour	1,000	-13%	0%	0%	-6%	
ToT (Wage/WF)	25	15%	0%	0%	6%	
ToT (Wage/FB)	22	-1%	-7%	-8%	-13%	
Food Basket	24,535	1%	8%	9%	15%	
SMEB	122,525	-1%	6%	7%	14%	
Diyala	Beans (white)	2,500	9%	0%	0%	0%
	Bread (khoboz)	250	0%	0%	9%	25%
	Bulgur	2,000	0%	3%	0%	0%
	Cheese	5,500	0%	0%	0%	7%
	Chickpeas	2,750	0%	-4%	-8%	-8%
	Dates	2,250	61%	38%	50%	50%
	Eggs	220	0%	0%	0%	-12%
	Fish (fresh)	5,375	-16%	-40%	-22%	5%
	Fuel (gas)	8,000	0%	0%	0%	0%
	Fuel (kerosene)	500	0%	0%	0%	0%
	Fuel (Super Petrol)	500	0%	0%	0%	-4%
	Lentils	2,000	11%	-3%	-20%	0%
	Meat (beef)	15,000	0%	0%	2%	7%
	Meat (chicken)	5,500	0%	1%	-4%	0%
	Meat (lamb)	15,000	0%	0%	3%	7%
	Milk	2,000	0%	0%	0%	0%
	Milk (powder)	8,500	0%	0%	0%	0%
	Oil (vegetable)	3,250	8%	8%	-7%	30%
	Onions	813	8%	8%	8%	8%
	Potatoes	938	17%	25%	-21%	25%
Rice	2,125	-3%	-8%	-15%	6%	
Salt (iodised)	500	0%	0%	0%	0%	
Sugar	1,250	0%	0%	0%	25%	
Tea	6,000	0%	0%	-4%	-14%	
Tomatoes	1,063	25%	55%	-11%	31%	
Wage (casual labour)	15,000	0%	0%	0%	-8%	
Wheat flour	1,250	0%	0%	0%	25%	
ToT (Wage/WF)	12	0%	0%	0%	-26%	
ToT (Wage/FB)	11	-1%	2%	10%	-17%	
Food Basket	30,068	1%	-2%	-9%	12%	
SMEB	142,538	2%	-1%	-8%	11%	
Duhok	Beans (white)	2,688	-10%	13%	13%	-7%
	Bread (khoboz)	250	0%	0%	0%	0%
	Bulgur	1,250	0%	3%	3%	-13%
	Cheese	7,500	0%	7%	18%	0%
	Chickpeas	3,250	0%	-4%	16%	11%
	Dates	3,000	0%	-37%	20%	26%
	Eggs	200	9%	20%	20%	-10%
	Fish (fresh)	7,000	0%	-5%	6%	4%
	Fuel (gas)	9,000	0%	0%	-20%	0%
	Fuel (kerosene)	1,200	8%	23%	24%	77%
	Fuel (Super Petrol)	966	-7%	-21%	3%	8%
	Lentils	2,500	0%	43%	34%	-9%
	Meat (beef)	15,000	0%	-2%	2%	18%
	Meat (chicken)	4,375	11%	-8%	6%	-4%
	Meat (lamb)	14,000	0%	-2%	4%	2%
	Milk	1,563	4%	4%	4%	4%
	Milk (powder)	7,500	0%	-10%	-2%	-22%
	Oil (vegetable)	3,000	3%	-16%	-11%	9%
	Onions	813	63%	18%	8%	8%
	Potatoes	938	25%	25%	-6%	25%
Rice	2,050	4%	-7%	-2%	2%	
Salt (iodised)	500	-33%	0%	0%	0%	
Sugar	1,438	15%	15%	15%	-4%	
Tea	9,750	-3%	11%	5%	1%	
Tomatoes	1,000	33%	78%	-20%	-6%	
Wage (casual labour)	25,000	0%	0%	0%	0%	
Wheat flour	1,288	-8%	3%	3%	3%	
ToT (Wage/WF)	19	9%	-3%	-3%	-3%	
ToT (Wage/FB)	19	-1%	0%	-3%	-1%	
Food Basket	29,398	1%	0%	3%	1%	
SMEB	144,288	-1%	3%	4%	-1%	

1M refers to month-on-month price comparison. **3M** compares current month price with 3 month ago. **6M** compares current month price to six months ago. **1Y** refers to year-on-year comparison.

Percent price decrease beyond the defined threshold (-5%) are highlighted with a **green dot**, while percent price increase beyond the defined thresholds (5%) are highlighted with a **red dot**. Changes within 'normal' values (±5%) are represented with a **yellow dot** and represent price stability.

Annex 1: Market Prices by Governorates and Commodity

Commodities	Current Month	% Change from Previous period			
		1 M	3 M	6 M	1 Yr
Beans (white)	2,375	● -5%	● -5%	● -5%	● 36%
Bread (khoboz)	250	● 0%	● 0%	● 0%	● 25%
Bulgur	1,688	● -1%	● -4%	● 13%	● 17%
Cheese	6,000	● -8%	● -9%	● 4%	● 20%
Chickpeas	2,000	● -20%	● -20%	● -20%	● 14%
Dates	3,000	● 0%	● 0%	● 0%	● 20%
Eggs	200	● 0%	● 0%	● 0%	● 0%
Fish (fresh)	5,500	● -18%	● -39%	● -14%	● 5%
Fuel (gas)	12,000	● 2%	● 0%	● -8%	● -3%
Fuel (kerosene)	950	● -3%	● 1%	● 12%	● 73%
Fuel (Super Petrol)	950	● 0%	● -6%	● 0%	● 25%
Lentils	1,750	● 6%	● -3%	● 17%	● 40%
Meat (beef)	16,000	● 0%	● 2%	● 7%	● 7%
Meat (chicken)	2,750	● 12%	● -23%	● -21%	● -27%
Meat (lamb)	16,000	● 0%	● 2%	● 7%	● 14%
Milk	1,750	● 0%	● 0%	● 8%	● 17%
Milk (powder)	4,875	● 8%	● -13%	● 5%	● 22%
Oil (vegetable)	3,063	● -10%	● -13%	● -13%	● 23%
Onions	1,000	● 5%	● 7%	● 0%	● 100%
Potatoes	1,000	● 11%	● 14%	● 0%	● 100%
Rice	1,938	● 11%	● -3%	● -3%	● 11%
Salt (iodised)	500	● 0%	● 0%	● 0%	● 0%
Sugar	1,250	● 0%	● 0%	● 0%	● 25%
Tea	8,500	● 0%	● 0%	● 0%	● 1%
Tomatoes	813	● 2%	● 8%	● -19%	● 18%
Wage (casual labour)	20,000	● 0%	● 0%	● 0%	● 0%
Wheat flour	1,000	● 0%	● 0%	● 0%	● 0%
ToT (Wage/WF)	20	● 0%	● 0%	● 0%	● 0%
ToT(Wage/FB)	18	● -4%	● 6%	● 4%	● -7%
Food Basket	24,758	● 4%	● -5%	● -4%	● 8%
SMEB	119,372	● 2%	● -3%	● 1%	● 14%

Commodities	Current Month	% Change from Previous period			
		1 M	3 M	6 M	1 Yr
Beans (white)	2,750	● 0%	● 0%	● 0%	● 7%
Bread (khoboz)	250	● 0%	● -1%	● 0%	● 0%
Bulgur	1,250	● 0%	● 0%	● 0%	● 5%
Cheese	4,350	● 0%	● 0%	● 0%	● -1%
Chickpeas	2,950	● 0%	● 0%	● 0%	● 4%
Dates	1,000	● 0%	● 0%	● 0%	● -11%
Eggs	183	● 22%	● 26%	● 10%	● -3%
Fish (fresh)	4,750	● 0%	● 0%	● 0%	● -1%
Fuel (gas)	7,000	● 0%	● 0%	● 0%	● 0%
Fuel (kerosene)	150	● 0%	● 0%	● 0%	● 0%
Fuel (Super Petrol)	450	● 0%	● 0%	● 0%	● 0%
Lentils	2,250	● 0%	● 0%	● 0%	● 9%
Meat (beef)	16,000	● 0%	● 0%	● 10%	● 11%
Meat (chicken)	5,438	● -1%	● -9%	● -9%	● 1%
Meat (lamb)	15,500	● 0%	● 0%	● 11%	● 8%
Milk	1,750	● 0%	● 0%	● 0%	● 4%
Milk (powder)	4,500	● 0%	● 0%	● 0%	● -13%
Oil (vegetable)	2,900	● -3%	● -17%	● -17%	● 15%
Onions	752	● 0%	● 0%	● 0%	● 0%
Potatoes	750	● -1%	● 0%	● -25%	● -20%
Rice	2,000	● 0%	● -9%	● -9%	● 14%
Salt (iodised)	900	● 0%	● 0%	● 0%	● 6%
Sugar	1,350	● 0%	● 0%	● 0%	● 6%
Tea	7,563	● -2%	● -2%	● -2%	● 0%
Tomatoes	1,000	● 100%	● 100%	● -20%	● 0%
Wage (casual labour)	18,000	● 0%	● 0%	● 0%	● 0%
Wheat flour	1,000	● 0%	● -9%	● -13%	● 0%
ToT (Wage/WF)	18	● 0%	● 10%	● 15%	● 0%
ToT(Wage/FB)	14	● 1%	● 9%	● 11%	● -6%
Food Basket	27,920	● -1%	● -8%	● -10%	● 7%
SMEB	131,645	● 0%	● -6%	● -7%	● 8%

Commodities	Current Month	% Change from Previous period			
		1 M	3 M	6 M	1 Yr
Beans (white)	2,500	● 0%	● 0%	● 0%	● 11%
Bread (khoboz)	143	● 0%	● 0%	● 0%	● 14%
Bulgur	1,500	● 0%	● 0%	● 0%	● 0%
Cheese	6,000	● -12%	● -14%	● -11%	● -14%
Chickpeas	2,500	● 0%	● 0%	● 0%	● 18%
Dates	2,000	● 25%	● -27%	● 0%	● -11%
Eggs	200	● 11%	● 9%	● 20%	● -7%
Fish (fresh)	5,125	● 2%	● -15%	● -16%	● 32%
Fuel (gas)	6,000	● 0%	● 0%	● 0%	● 0%
Fuel (kerosene)	330	● -5%	● 32%	● -6%	● -6%
Fuel (Super Petrol)	450	● 0%	● 0%	● 0%	● 0%
Lentils	2,500	● 0%	● 0%	● 0%	● 67%
Meat (beef)	12,000	● 2%	● 9%	● 0%	● 0%
Meat (chicken)	4,375	● 12%	● 3%	● 0%	● 9%
Meat (lamb)	14,000	● 1%	● 8%	● 0%	● 0%
Milk	2,000	● 0%	● 0%	● 0%	● 0%
Milk (powder)	6,000	● 0%	● 0%	● 0%	● 0%
Oil (vegetable)	3,500	● 0%	● 4%	● 12%	● 65%
Onions	500	● 0%	● 0%	● 43%	● 0%
Potatoes	875	● -3%	● -7%	● -18%	● 27%
Rice	2,000	● 0%	● 14%	● 14%	● 14%
Salt (iodised)	1,000	● 0%	● 0%	● 0%	● 0%
Sugar	1,250	● 0%	● 0%	● 0%	● 25%
Tea	6,000	● 0%	● 0%	● 0%	● 0%
Tomatoes	750	● 50%	● 82%	● -14%	● 20%
Wage (casual labour)	25,000	● 0%	● 0%	● 0%	● 0%
Wheat flour	1,000	● 0%	● -5%	● 3%	● 33%
ToT (Wage/WF)	25	● 0%	● 5%	● -3%	● -25%
ToT(Wage/FB)	20	● -1%	● -4%	● -5%	● -21%
Food Basket	27,695	● 2%	● 4%	● 6%	● 26%
SMEB	134,525	● 0%	● 2%	● 5%	● 27%

1M refers to month-on-month price comparison. **3M** compares current month price with 3 month ago. **6M** compares current month price to six months ago. **1Y** refers to year-on-year comparison.

Percent price decrease beyond the defined threshold (-5%) are highlighted with a **green dot**, while percent price increase beyond the defined thresholds (5%) are highlighted with a **red dot**. Changes within 'normal' values (±5%) are represented with a **yellow dot** and represent price stability.

Annex 1: Market Prices by Governorates and Commodity

Governorate	Commodities	Current Month	% Change from Previous period			
			1 M	3 M	6 M	1 Yr
Najawa	Beans (white)	2,500	4%	11%	-9%	0%
	Bread (khoboz)	200	0%	0%	0%	20%
	Bulgur	1,500	0%	0%	20%	50%
	Cheese	5,250	5%	5%	5%	-5%
	Chickpeas	3,375	7%	13%	13%	29%
	Dates	1,500	0%	0%	0%	20%
	Eggs	200	9%	20%	2%	-14%
	Fish (fresh)	2,125	18%	13%	6%	42%
	Fuel (gas)	8,000	0%	0%	-6%	0%
	Fuel (kerosene)	800	33%	33%	0%	-9%
	Fuel (Super Petrol)	450	0%	0%	0%	0%
	Lentils	2,000	0%	0%	-11%	0%
	Meat (beef)	11,000	0%	-6%	5%	10%
	Meat (chicken)	3,375	2%	-13%	-2%	-4%
	Meat (lamb)	12,000	-3%	-8%	-4%	-3%
	Milk	1,000	0%	0%	0%	0%
	Milk (powder)	7,000	0%	0%	0%	0%
	Oil (vegetable)	3,750	0%	0%	7%	46%
	Onions	625	33%	25%	19%	16%
	Potatoes	750	50%	50%	-8%	33%
	Rice	2,250	0%	0%	0%	13%
	Salt (iodised)	750	0%	0%	0%	0%
	Sugar	1,250	0%	0%	0%	0%
	Tea	7,000	0%	0%	0%	0%
	Tomatoes	750	56%	62%	-14%	33%
Wage (casual labour)	18,000	0%	4%	20%	20%	
Wheat flour	1,000	0%	0%	-20%	0%	
ToT (Wage/WF)	18	0%	4%	50%	20%	
ToT (Wage/FB)	15	-1%	5%	27%	10%	
Food Basket	27,278	1%	-1%	-6%	9%	
SMEB	135,525	0%	0%	-5%	9%	
Salah al-deen	Beans (white)	2,500	0%	3%	0%	11%
	Bread (khoboz)	200	0%	0%	0%	20%
	Bulgur	1,500	0%	0%	0%	9%
	Cheese	6,000	15%	14%	0%	2%
	Chickpeas	3,000	0%	0%	0%	20%
	Dates	2,000	0%	-20%	-20%	-11%
	Eggs	209	-1%	14%	11%	-11%
	Fish (fresh)	5,625	-5%	-21%	-24%	43%
	Fuel (gas)	6,000	0%	0%	0%	0%
	Fuel (kerosene)	165	0%	0%	0%	0%
	Fuel (Super Petrol)	450	0%	0%	0%	0%
	Lentils	2,500	0%	0%	0%	43%
	Meat (beef)	12,000	0%	0%	7%	20%
	Meat (chicken)	3,438	3%	-19%	-19%	-5%
	Meat (lamb)	14,000	0%	0%	6%	17%
	Milk	1,750	0%	0%	0%	0%
	Milk (powder)	6,000	0%	0%	0%	0%
	Oil (vegetable)	3,438	-2%	-2%	-2%	25%
	Onions	750	7%	33%	50%	33%
	Potatoes	1,063	12%	47%	0%	42%
	Rice	2,500	4%	11%	11%	25%
	Salt (iodised)	750	0%	0%	0%	0%
	Sugar	1,250	0%	0%	0%	0%
	Tea	6,000	0%	0%	0%	0%
	Tomatoes	938	25%	88%	-6%	20%
Wage (casual labour)	25,000	0%	0%	0%	0%	
Wheat flour	840	0%	0%	0%	17%	
ToT (Wage/WF)	30	0%	0%	0%	-14%	
ToT (Wage/FB)	20	-2%	-2%	-1%	-16%	
Food Basket	28,185	2%	2%	1%	19%	
SMEB	138,053	1%	3%	4%	21%	
Sulaimaniya	Beans (white)	2,250	0%	0%	0%	0%
	Bread (khoboz)	125	0%	-19%	0%	0%
	Bulgur	1,000	0%	0%	0%	0%
	Cheese	4,500	-6%	13%	0%	13%
	Chickpeas	2,500	0%	0%	0%	0%
	Dates	2,500	9%	25%	5%	18%
	Eggs	163	0%	0%	-8%	-12%
	Fish (fresh)	6,625	2%	-15%	26%	47%
	Fuel (gas)	8,500	0%	0%	0%	0%
	Fuel (kerosene)	1,575	43%	31%	58%	121%
	Fuel (Super Petrol)	1,219	-4%	-16%	13%	28%
	Lentils	1,213	-1%	1%	1%	1%
	Meat (beef)	16,000	0%	0%	0%	7%
	Meat (chicken)	3,475	10%	-30%	-4%	-14%
	Meat (lamb)	16,000	0%	0%	0%	7%
	Milk	1,250	0%	0%	0%	0%
	Milk (powder)	5,375	19%	19%	8%	19%
	Oil (vegetable)	3,750	1%	7%	-6%	36%
	Onions	1,000	0%	0%	0%	0%
	Potatoes	1,000	0%	0%	0%	0%
	Rice	1,875	0%	-6%	-13%	35%
	Salt (iodised)	500	0%	0%	0%	0%
	Sugar	1,500	0%	0%	-8%	36%
	Tea	8,500	0%	0%	0%	0%
	Tomatoes	1,313	1%	5%	5%	5%
Wage (casual labour)	25,000	0%	0%	0%	14%	
Wheat flour	1,475	15%	23%	19%	15%	
ToT (Wage/WF)	17	-13%	-19%	-16%	-1%	
ToT (Wage/FB)	20	-5%	0%	1%	-3%	
Food Basket	27,893	6%	6%	-1%	17%	
SMEB	129,288	6%	8%	2%	19%	
Tikrit	Beans (white)	2,500	0%	0%	0%	0%
	Bread (khoboz)	166	0%	17%	17%	17%
	Bulgur	2,000	0%	0%	0%	0%
	Cheese	5,000	0%	0%	0%	-17%
	Chickpeas	3,000	0%	0%	0%	0%
	Dates	2,000	33%	-11%	0%	0%
	Eggs	200	16%	20%	20%	-14%
	Fish (fresh)	5,750	-3%	-12%	-16%	24%
	Fuel (gas)	7,000	0%	0%	0%	0%
	Fuel (kerosene)	568	0%	4%	83%	109%
	Fuel (Super Petro)	450	0%	0%	0%	0%
	Lentils	2,500	0%	0%	0%	25%
	Meat (beef)	12,000	0%	0%	0%	20%
	Meat (chicken)	3,850	5%	-12%	-2%	-2%
	Meat (lamb)	15,000	0%	0%	0%	0%
	Milk	1,250	0%	0%	0%	0%
	Milk (powder)	11,000	0%	0%	0%	10%
	Oil (vegetable)	3,438	-2%	-11%	-2%	53%
	Onions	688	-8%	-8%	0%	10%
	Potatoes	1,000	5%	33%	-6%	33%
	Rice	1,750	0%	4%	17%	17%
	Salt (iodised)	1,000	0%	0%	0%	0%
	Sugar	1,250	0%	0%	0%	0%
	Tea	6,000	0%	0%	0%	0%
	Tomatoes	1,000	5%	33%	-6%	23%
Wage (casual lat)	25,000	0%	0%	0%	0%	
Wheat flour	1,000	0%	0%	19%	27%	
ToT (Wage/WF)	25	0%	0%	-16%	-21%	
ToT (Wage/FB)	21	-1%	2%	-8%	-16%	
Food Basket	25,970	1%	-2%	8%	19%	
SMEB	135,291	0%	-1%	7%	17%	
Wasit	Beans (white)	3,000	0%	0%	0%	7%
	Bread (khoboz)	143	0%	0%	0%	1%
	Bulgur	2,000	0%	0%	-6%	33%
	Cheese	4,000	0%	0%	-6%	-20%
	Chickpeas	2,625	1%	5%	-13%	-13%
	Dates	2,000	0%	0%	0%	0%
	Eggs	129	2%	-16%	-41%	-41%
	Fish (fresh)	5,125	-21%	-32%	-13%	-9%
	Fuel (gas)	6,000	0%	0%	0%	0%
	Fuel (kerosene)	300	0%	0%	0%	0%
	Fuel (Super Petro)	450	0%	0%	0%	0%
	Lentils	2,000	0%	0%	-14%	23%
	Meat (beef)	11,000	0%	0%	0%	0%
	Meat (chicken)	4,125	-33%	-45%	-37%	-34%
	Meat (lamb)	14,000	0%	0%	0%	0%
	Milk	1,000	0%	0%	0%	0%
	Milk (powder)	5,000	0%	0%	0%	0%
	Oil (vegetable)	3,500	0%	0%	0%	27%
	Onions	688	-14%	38%	-21%	-8%
	Potatoes	813	-14%	8%	-28%	8%
	Rice	1,938	-3%	-3%	-3%	11%
	Salt (iodised)	1,250	0%	0%	0%	0%
	Sugar	1,250	0%	-2%	-4%	0%
	Tea	5,000	0%	0%	0%	0%
	Tomatoes	875	-13%	75%	-44%	-13%
Wage (casual lat)	18,000	0%	0%	0%	0%	
Wheat flour	1,009	0%	0%	0%	1%	
ToT (Wage/WF)	18	0%	0%	0%	-1%	
ToT (Wage/FB)	15	8%	13%	11%	-1%	
Food Basket	26,402	-8%	-11%	-10%	1%	
SMEB	131,045	-1%	-1%	-4%	11%	

