



World Food Programme

Issue No. 32
April 2022

IRAQ Market Monitor Report

© WFP/Saif al-Tatooz

Highlights

- The prices of essential food commodities were generally stable during April.
- Low agricultural production and high prices in global food markets will increase the import bill.
- The oil revenue for Iraq during April was USD10.5 billion while it was USD 11 billion during March 2022: Highest in 50 years.
- Stalemate in post-election formation of a government is resulting in multiple challenges including access to financial resources.
- An Emergency Food Security Law was drafted to support Food Security, Development, Financial Precaution and Poverty Alleviation in the country. It was initially rejected and awaits a second reading in the Council of Representatives.

Since the onset of the Russia-Ukraine crisis which started on 24 February 2022, food and energy prices have been impacted across the globe.

Although the rising oil prices were somehow decelerated due to decreased demand in China resulting from the lockdown, only peace and cessation of fighting can subside the surge in food prices. On the other hand, if the conflict continues, there will be significant longer-term impacts on the global food supply. Many of the Ukrainian farmers will miss their planting season and because of the sanctions, food exports from Russia might also not be available.

Unprecedented low rainfall in the Tigris-Euphrates River basin during the 2020/21 cropping season resulted in crop failure in the rainfed areas particularly in northern Iraq. The national cereal production in the

2020/21 season was 38 percent lower compared to previous season. Due to the low availability of water from riparian countries, water scarcity in Iraq worsened. To prioritize drinking water, the government implemented a reduced agricultural plan and restricted the plantation in irrigated areas to 50 percent only. A much lower production is forecasted for the 2021/22 season. It will impact food security and take a high toll on the Iraqi import bill. Import dependency of cereal in Iraq reached 56 percent during March. The government is trying to respond to the looming crisis with subsidies and market interventions.

Being an oil exporting country, Iraq has some collateral to offset the increasing food prices. Iraq's oil revenue during March 2022 was the highest in fifty years (around USD11 billion). It was around USD10.6 billion in April.

Contacts

Ally-Raza Qureshi
ally-raza.qureshi@wfp.org

Fawad Raza
fawad.raza@wfp.org

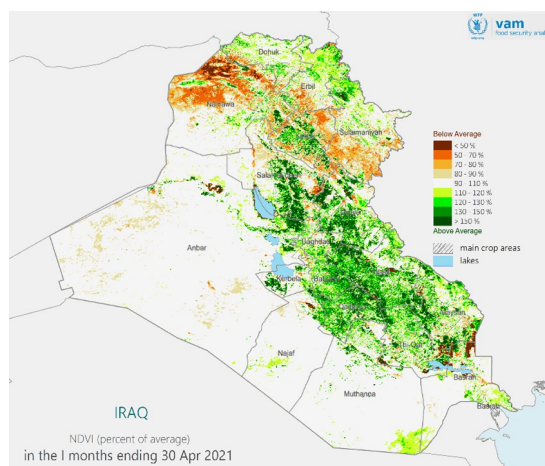


Figure 1: Vegetation cover change - April 2021

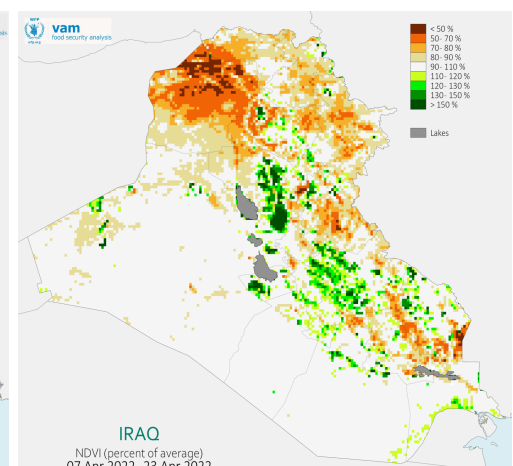


Figure 2: Vegetation cover change - April 2022

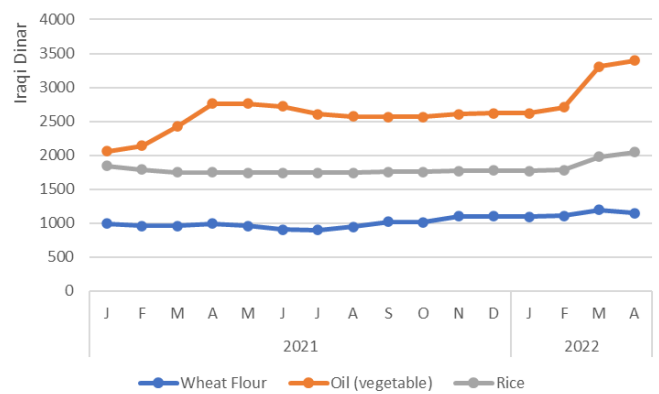
Food Prices

Ukraine is one of the largest exporters of essential food commodities, globally. Prior to the conflict, Ukraine exported up to 6 million metric tonnes (MT) of grains a month. Only 300,000 MT were shipped out in March and 923,000 MT in April. Around 25 million MT of grain is stuck in Ukraine which created a demand and supply gap. The agriculture minister of Ukraine reported that Ukraine harvested a record 106 million MT of grain during previous season however, the figure could drop 25 or even 50 percent this year. FAO estimates that around 20-30 percent of areas with winter crops in Ukraine will remain unharvested during the 2022/23 season. The Ukrainian farmers will miss the planting season due to the security situation, lack of manpower at farms and the disrupted supply chain of agricultural inputs and fuel. The Iraqi Ministry of Trade attributed the rise in vegetable oil prices to supply disruptions because of the conflict. To contain the impact of rising food prices at the household level and stem the protests in southern Iraq, the government announced a USD70 monthly allowance to economically vulnerable citizens. As global food prices increased significantly by late March, the Iraqi authorities have also increased the subsidy on wheat procurement for farmers to 85,000 per MT. In response to soaring cooking oil prices, the Kurdistan Region authorized strict measures against price gouging and discussions are taking place to replace foreign laborers with domestic workers.

The FAO Food Price Index (FFPI) averaged 158.5 points in April 2022, slightly down (0.8 percent) from the all-time high reached in March. It is still 36.4 points (29.8 percent) above its Year-on-Year value compared to the corresponding month last year. The drop in the FFPI in April was primarily driven by a decline in global prices

of palm, sunflower, and soy oil. The drop is linked to demand-rationing due to high prices as well as a weakening demand outlook in China.

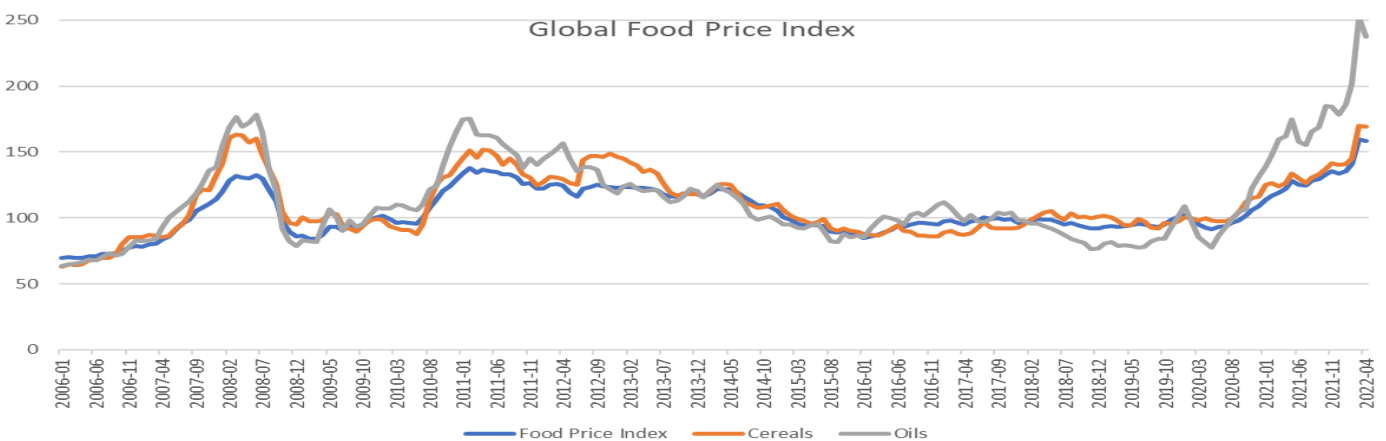
During April the prices of most of the commodities in Iraq remained stable. The highest price increases were observed in tomatoes (21 percent) and potatoes (11 percent). The highest month-over-month (m/m) increases in tomato price were observed in Anbar (58 percent), Wassit (56 percent) and Erbil (43 percent). The m/m potato prices increased 100 percent in Erbil (from IQD500/kg to IQD1000/kg). Potato prices also increased in Wassit (50 percent), Basra (29 percent) and Ninewa governorate (25 percent). The increase in vegetable prices is primarily linked to the seasonality.



The average m/m prices of vegetable oil as well as rice increased by 3 percent. The highest m/m increases in vegetable oil prices were in Wassit (11 percent), Anbar (10 percent) and Kirkuk (6 percent). Notable increases were also observed in rice prices in Diyala (19 percent), Sulaymaniyah (13 percent), Baghdad (9 percent) and Maysan (8 percent).

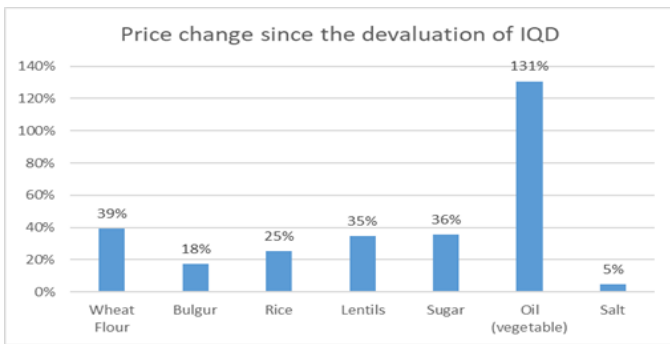
Compared to March prices, a slight drop (4 percent) at national level was observed in wheat flour prices.

Iraq is expecting a lower harvest during the 2021/22 season because of the reduced agricultural plan



primarily attributed to the water shortage. The Iraqi Minister of Trade expects locally produced wheat to reach 2.5 million MT this year. The government also raised the import requirements to 3million MT.

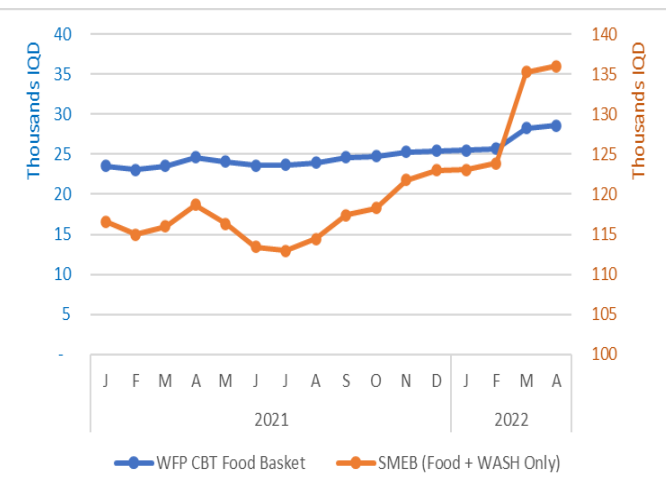
Following the devaluation of the Iraqi dinar in December 2020, the prices of essential food commodities increased. When comparing April 2022 prices with November 2020, a 131 percent increase was observed in vegetable oil prices while wheat flour prices increased by 40 percent in Iraq.



Food Basket Price

The price of the WFP food basket for its Cash Based Transfer (CBT)¹ activities has increased by 12 percent since the beginning of the year.

The Food and WASH portion of the Survival Minimum Expenditure Basket (SMEB)² has also increased by 11 percent, since the beginning of the year. The increasing prices of essential food items are significantly eroding the purchasing power of vulnerable families.



The Public Distribution System (PDS) for food rations of Iraq completed its fourth cycle of distributions for the year. The PDS is a universal food subsidy programme established in 1990s. With all its

¹ WFP CBT food basket includes wheat flour, rice, vegetable oil, lentils, salt, sugar, pasta, chicken, vegetables, and milk

² The SMEB includes seven food items (lentil, vegetable oil, rice, sugar, bulgur, salt, wheat flour) and eight non-food WASH items (laundry detergent, sanitary pads, shampoo, soap, toothbrush, tooth paste and garbage bags)

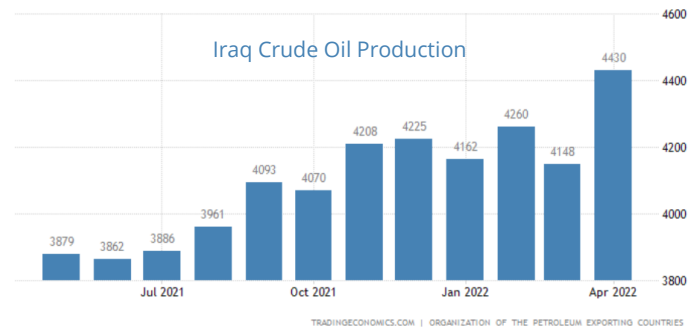
³ PDS provides six essential food commodities including wheat flour, rice, vegetable oil, sugar, pulses, and tomato paste.

limitations and challenges, it plays a vital role in helping ensure food security in Iraq and containing the prices of essential food items.

Iraq has been going through a political stalemate over the past seven months. In the absence a new annual budget, the social safety nets and other development initiatives are struggling to meet their financial commitments. An Emergency Food Security Law was drafted in April to support Food Security, Development, Financial Precaution and Poverty Alleviation in Iraq. The bill was initially rejected and now awaits a second reading in the Council of Representatives.

Oil Prices

Over the course of April, crude oil production increased in Iraq. According to the Ministry of Petroleum statistics, the monthly production of crude oil during April was around 4.4million barrels per day while in March it was around 4.1 million barrels per day. The prices of Basra heavy crude oil were on a 50 year high. The oil revenue for Iraq during March was around USD 11 billion.



Oil prices fell in April, primarily due to lockdowns in China. Iraq generated USD10.55 billion oil revenue during April. Despite record revenue milestones, the Iraqi government does not have necessary financial instruments yet to access these resources.

WFP Market Price Monitoring

Market price information is collected for 34 different food and non food items, on a weekly basis from all the governorates in Iraq. This includes 23 food commodities, three types of fuel, six hygiene items, the wage rate of unskilled laborers and the exchange rate. The data is also accessible from WFP's global data platforms (<https://dataviz.vam.wfp.org/>).

Annex 1: Market Prices by Governorates and Commodity

	Commodities	April	% Change from Previous period				Commodities	April	% Change from Previous period				Commodities	April	% Change from Previous period			
			1M	3M	6M	1Yr			1M	3M	6M	1Yr			1M	3M	6M	1Yr
Anbar	Beans (white)	2,500	0%	0%	0%	0%	Beans (white)	2,750	0%	0%	-4%	-5%	Beans (white)	2,500	0%	0%	0%	-17%
	Bread (khoboz)	200	0%	0%	0%	0%	Bread (khoboz)	238	3%	19%	19%	19%	Bread (khoboz)	230	15%	2%	15%	15%
	Bulgur	1,250	0%	25%	25%	25%	Bulgur	2,500	0%	0%	0%	0%	Bulgur	2,000	0%	0%	0%	18%
	Cheese	4,000	0%	0%	0%	0%	Cheese	5,000	0%	0%	0%	0%	Cheese	5,500	0%	1%	7%	0%
	Chickpeas	2,625	5%	5%	5%	5%	Chickpeas	2,500	0%	0%	0%	0%	Chickpeas	3,000	0%	0%	0%	20%
	Dates	1,125	2%	13%	13%	13%	Dates	2,500	0%	0%	0%	0%	Dates	1,500	0%	-14%	0%	-25%
	Eggs	192	2%	-6%	-7%	15%	Eggs	250	0%	0%	0%	0%	Eggs	220	3%	0%	-12%	5%
	Fish (fresh)	7,000	1%	27%	22%	56%	Fish (fresh)	6,500	12%	27%	21%	30%	Fish (fresh)	6,875	32%	38%	34%	38%
	Fuel (gas)	7,000	0%	-2%	0%	0%	Fuel (gas)	8,000	0%	0%	0%	3%	Fuel (gas)	8,000	0%	0%	0%	0%
	Fuel (kerosene)	500	0%	0%	0%	0%	Fuel (kerosene)	500	0%	0%	0%	0%	Fuel (kerosene)	500	0%	0%	0%	0%
	Fuel (Super Petrol)	450	0%	-10%	-10%	-10%	Fuel (Super Petro	450	0%	0%	0%	0%	Fuel (Super Petrol)	500	0%	0%	-4%	0%
	Lentils	2,000	0%	0%	7%	33%	Lentils	2,500	47%	67%	67%	0%	Lentils	2,500	0%	25%	25%	14%
	Meat (beef)	12,250	2%	23%	23%	23%	Meat (beef)	16,000	0%	0%	0%	1%	Meat (beef)	14,725	5%	5%	5%	5%
	Meat (chicken)	3,875	-2%	5%	0%	-8%	Meat (chicken)	6,000	0%	-2%	-6%	25%	Meat (chicken)	5,750	11%	15%	5%	-1%
	Meat (lamb)	14,000	4%	12%	17%	17%	Meat (lamb)	16,000	0%	0%	0%	1%	Meat (lamb)	14,500	4%	4%	4%	8%
	Milk	1,563	4%	4%	-11%	-11%	Milk	1,750	0%	0%	0%	0%	Milk	2,000	0%	0%	0%	-8%
	Milk (powder)	5,000	0%	-5%	0%	0%	Milk (powder)	7,000	0%	0%	0%	0%	Milk (powder)	8,500	-1%	0%	0%	4%
	Oil (vegetable)	3,625	10%	45%	45%	32%	Oil (vegetable)	3,500	0%	22%	40%	21%	Oil (vegetable)	3,500	3%	37%	40%	19%
	Onions	663	-12%	33%	33%	33%	Onions	1,000	0%	7%	7%	25%	Onions	750	-21%	0%	0%	0%
	Potatoes	1,188	25%	102%	90%	138%	Potatoes	1,375	15%	38%	38%	72%	Potatoes	1,188	8%	27%	58%	58%
Rice	1,750	6%	17%	17%	17%	Rice	2,500	9%	67%	67%	67%	Rice	2,500	19%	29%	25%	25%	
Salt (iodised)	1,813	-2%	81%	81%	91%	Salt (iodised)	500	0%	0%	0%	-33%	Salt (iodised)	500	0%	0%	0%	0%	
Sugar	1,313	1%	31%	31%	31%	Sugar	1,500	-6%	0%	0%	0%	Sugar	1,250	0%	0%	25%	0%	
Tea	6,500	0%	0%	0%	0%	Tea	8,000	1%	7%	7%	7%	Tea	6,250	-11%	-11%	-11%	-13%	
Tomatoes	1,188	58%	58%	58%	32%	Tomatoes	1,375	15%	38%	38%	72%	Tomatoes	1,188	8%	27%	47%	40%	
Wage (casual labo	25,000	0%	0%	0%	0%	Wage (casual lab	25,000	0%	0%	0%	0%	Wage (casual labour	15,000	0%	0%	-8%	0%	
Wheat flour	1,000	-18%	0%	0%	0%	Wheat flour	1,500	-6%	0%	0%	0%	Wheat flour	1,250	0%	0%	25%	0%	
ToT (Wage/WF)	25	22%	0%	0%	0%	ToT (Wage/WF)	17	7%	0%	0%	0%	ToT (Wage/WF)	12	0%	0%	-26%	0%	
ToT(Wage/FB)	21	2%	-12%	-12%	-12%	ToT(Wage/FB)	16	-4%	-18%	-19%	-19%	ToT(Wage/FB)	10	-8%	-15%	-25%	-10%	
Food Basket	25,984	-2%	14%	13%	13%	Food Basket	34,961	4%	23%	23%	23%	Food Basket	32,925	8%	17%	22%	11%	
SMEB	121,053	-3%	12%	13%	16%	SMEB	157,050	5%	22%	23%	13%	SMEB	154,363	4%	13%	20%	10%	
Babylon	Beans (white)	2,000	0%	0%	0%	-11%	Beans (white)	2,500	0%	0%	0%	0%	Beans (white)	2,375	-5%	-21%	-17%	-21%
	Bread (khoboz)	166	0%	0%	0%	0%	Bread (khoboz)	225	-6%	13%	16%	29%	Bread (khoboz)	250	0%	0%	0%	0%
	Bulgur	1,250	4%	0%	25%	25%	Bulgur	2,000	0%	0%	0%	0%	Bulgur	1,213	1%	-19%	-16%	-3%
	Cheese	8,000	0%	7%	33%	38%	Cheese	6,000	0%	0%	0%	0%	Cheese	6,375	-9%	-15%	-15%	1%
	Chickpeas	2,750	0%	0%	10%	34%	Chickpeas	2,000	0%	0%	0%	0%	Chickpeas	2,813	6%	-6%	-4%	0%
	Dates	2,000	0%	33%	100%	33%	Dates	1,500	0%	0%	0%	0%	Dates	2,500	25%	0%	5%	4%
	Eggs	150	-15%	-25%	-31%	-18%	Eggs	225	-10%	-10%	-10%	13%	Eggs	166	4%	-22%	-25%	-4%
	Fish (fresh)	6,500	-6%	1%	53%	81%	Fish (fresh)	6,000	-9%	20%	23%	20%	Fish (fresh)	6,625	16%	-9%	-2%	10%
	Fuel (gas)	6,000	0%	0%	0%	0%	Fuel (gas)	7,000	0%	0%	0%	0%	Fuel (gas)	11,250	-25%	18%	23%	25%
	Fuel (kerosene)	350	21%	40%	59%	59%	Fuel (kerosene)	400	0%	0%	0%	0%	Fuel (kerosene)	969	-6%	17%	43%	86%
	Fuel (Super Petrol)	450	0%	0%	0%	0%	Fuel (Super Petro	460	0%	0%	0%	0%	Fuel (Super Petrol)	934	-5%	11%	4%	51%
	Lentils	2,000	0%	0%	33%	33%	Lentils	2,000	0%	0%	0%	0%	Lentils	1,863	-29%	-38%	-32%	-15%
	Meat (beef)	14,000	1%	10%	17%	17%	Meat (beef)	12,750	0%	6%	6%	6%	Meat (beef)	14,750	5%	13%	16%	9%
	Meat (chicken)	3,563	-1%	4%	4%	-5%	Meat (chicken)	4,375	-8%	-3%	0%	5%	Meat (chicken)	4,125	3%	-13%	-10%	21%
	Meat (lamb)	13,000	2%	8%	8%	8%	Meat (lamb)	14,000	0%	0%	0%	0%	Meat (lamb)	13,500	4%	-4%	-2%	5%
	Milk	1,000	-17%	0%	0%	-17%	Milk	1,500	0%	0%	0%	0%	Milk	1,500	3%	0%	0%	0%
	Milk (powder)	6,500	15%	27%	30%	30%	Milk (powder)	10,000	0%	0%	0%	0%	Milk (powder)	7,625	2%	-21%	-21%	2%
	Oil (vegetable)	3,250	1%	30%	30%	27%	Oil (vegetable)	3,000	3%	20%	20%	0%	Oil (vegetable)	3,375	1%	23%	23%	25%
	Onions	500	-29%	-26%	-23%	14%	Onions	844	21%	13%	17%	41%	Onions	750	0%	0%	0%	7%
	Potatoes	1,188	8%	56%	30%	101%	Potatoes	906	29%	21%	26%	21%	Potatoes	1,000	18%	0%	33%	82%
Rice	1,250	0%	0%	0%	0%	Rice	2,500	4%	25%	25%	25%	Rice	2,100	-11%	8%	5%	8%	
Salt (iodised)	1,500	0%	0%	0%	0%	Salt (iodised)	1,000	0%	0%	0%	0%	Salt (iodised)	500	0%	0%	0%	0%	
Sugar	1,000	-5%	0%	0%	3%	Sugar	1,500	7%	50%	50%	50%	Sugar	1,250	0%	0%	-17%	-17%	
Tea	5,000	0%	0%	0%	0%	Tea	10,000	0%	0%	0%	0%	Tea	9,313	0%	-4%	-4%	-1%	
Tomatoes	1,038	9%	38%	11%	8%	Tomatoes	938	34%	25%	25%	-15%	Tomatoes	1,250	25%	25%	18%	47%	
Wage (casual labo	25,000	0%	0%	0%	0%	Wage (casual lab	25,000	0%	0%	0%	0%	Wage (casual labour	25,000	19%	0%	0%	0%	
Wheat flour	1,000	-5%	0%	-6%	33%	Wheat flour	900	2%	10%	73%	125%	Wheat flour	1,250	-7%	0%	0%	14%	
ToT (Wage/WF)	25	5%	0%	6%	-25%	ToT (Wage/WF)	28	-2%	-9%	-42%	-56%	ToT (Wage/WF)	20	2%	29%	0%	0%	
ToT(Wage/FB)	24	2%	-5%	-5%	-13%	ToT(Wage/FB)	19	-2%	-13%	-20%	-21%	ToT(Wage/FB)	19	2%	29%	3%	2%	
Food Basket	22,573	-2%	5%	6%	15%	Food Basket	28,564	2%	15%	25%	27%	Food Basket	28,583	-8%	-3%	-2%	11%	
SMEB	114,813	-1%	3%	7%	18%	SMEB	138,600	2%	12%	21%	22%	SMEB	138,119	-10%	-7%	-5%	4%	

1M refers to month-on-month price comparison. **3M** compares current month price with 3 month ago. **6M** compares current month price to six months ago. **1Y** refers to year-on-year comparison.

Percent price decrease beyond the defined threshold (-5%) are highlighted with a **green dot**, while percent price increase beyond the defined thresholds (5%) are highlighted with a **red dot**. Changes within 'normal' values (±5%) are represented with a **yellow dot** and represent price stability.

Annex 1: Market Prices by Governorates and Commodity

	Commodities	April	% Change from Previous period				Commodities	April	% Change from Previous period				Commodities	April	% Change from Previous period			
			1 M	3 M	6 M	1 Yr			1 M	3 M	6 M	1 Yr			1 M	3 M	6 M	1 Yr
Erbil	Beans (white)	2,500	4%	8%	43%	43%	Beans (white)	2,750	0%	2%	7%	10%	Beans (white)	2,500	4%	25%	11%	0%
	Bread (khoboz)	250	9%	25%	25%	25%	Bread (khoboz)	250	0%	0%	0%	25%	Bread (khoboz)	143	-3%	0%	14%	14%
	Bulgur	1,500	0%	0%	4%	20%	Bulgur	1,250	0%	0%	5%	25%	Bulgur	1,500	0%	0%	0%	0%
	Cheese	5,750	8%	10%	15%	15%	Cheese	4,350	0%	0%	-1%	9%	Cheese	6,750	5%	-4%	-4%	13%
	Chickpeas	2,500	-2%	21%	43%	43%	Chickpeas	2,950	0%	0%	4%	18%	Chickpeas	2,500	4%	25%	18%	0%
	Dates	2,750	4%	10%	10%	10%	Dates	1,000	0%	0%	-11%	-52%	Dates	2,000	0%	0%	-11%	0%
	Eggs	200	0%	0%	0%	0%	Eggs	166	6%	-2%	-12%	1%	Eggs	166	-8%	-17%	-23%	-9%
	Fish (fresh)	6,375	14%	24%	21%	28%	Fish (fresh)	4,750	0%	0%	-1%	9%	Fish (fresh)	6,125	23%	36%	58%	48%
	Fuel (gas)	13,000	5%	8%	5%	53%	Fuel (gas)	7,000	0%	-5%	0%	0%	Fuel (gas)	6,000	0%	0%	0%	0%
	Fuel (kerosene)	850	4%	36%	55%	70%	Fuel (kerosene)	150	0%	0%	0%	0%	Fuel (kerosene)	350	-30%	-60%	0%	-30%
	Fuel (Super Petrol)	950	1%	27%	25%	52%	Fuel (Super Petrol)	450	0%	0%	0%	0%	Fuel (Super Petrol)	450	0%	0%	0%	0%
	Lentils	1,500	0%	0%	20%	0%	Lentils	2,250	0%	0%	9%	29%	Lentils	2,500	9%	67%	67%	43%
	Meat (beef)	15,000	6%	1%	0%	0%	Meat (beef)	14,500	0%	0%	1%	5%	Meat (beef)	12,000	0%	20%	0%	0%
	Meat (chicken)	3,500	11%	14%	-7%	1%	Meat (chicken)	6,000	-2%	0%	12%	56%	Meat (chicken)	4,375	3%	13%	9%	-21%
	Meat (lamb)	15,000	7%	7%	7%	7%	Meat (lamb)	14,000	0%	0%	-3%	2%	Meat (lamb)	14,000	0%	0%	17%	0%
	Milk	1,625	5%	8%	8%	8%	Milk	1,750	0%	0%	4%	17%	Milk	2,000	0%	0%	0%	33%
	Milk (powder)	4,625	13%	16%	16%	16%	Milk (powder)	4,500	-8%	-10%	-13%	-32%	Milk (powder)	6,000	0%	0%	0%	-8%
	Oil (vegetable)	3,500	3%	40%	40%	37%	Oil (vegetable)	3,500	6%	43%	39%	56%	Oil (vegetable)	3,125	-8%	25%	47%	4%
	Onions	1,000	82%	100%	100%	100%	Onions	750	0%	0%	0%	0%	Onions	350	-33%	-44%	-30%	-15%
	Potatoes	1,000	100%	100%	100%	100%	Potatoes	1,000	0%	0%	7%	18%	Potatoes	1,063	-11%	42%	55%	113%
Rice	2,000	0%	14%	14%	14%	Rice	2,200	2%	10%	26%	26%	Rice	1,750	0%	0%	0%	0%	
Salt (iodised)	500	0%	0%	0%	0%	Salt (iodised)	900	0%	0%	6%	80%	Salt (iodised)	1,000	0%	0%	0%	0%	
Sugar	1,250	0%	0%	25%	25%	Sugar	1,350	0%	0%	6%	8%	Sugar	1,250	0%	25%	25%	25%	
Tea	8,500	0%	0%	1%	6%	Tea	7,750	1%	3%	2%	0%	Tea	6,000	0%	0%	0%	20%	
Tomatoes	1,000	43%	33%	45%	100%	Tomatoes	1,250	25%	25%	25%	56%	Tomatoes	875	35%	40%	40%	17%	
Wage (casual labo)	20,000	0%	0%	0%	0%	Wage (casual lab)	18,000	0%	0%	0%	-10%	Wage (casual labour)	25,000	0%	0%	0%	0%	
Wheat flour	1,000	-5%	0%	0%	0%	Wheat flour	1,150	1%	5%	15%	15%	Wheat flour	975	-1%	22%	30%	91%	
ToT (Wage/WF)	20	5%	0%	0%	0%	ToT (Wage/WF)	16	-1%	-4%	-13%	-22%	ToT (Wage/WF)	26	1%	-18%	-23%	-48%	
ToT (Wage/FB)	17	-2%	-11%	-11%	-10%	ToT (Wage/FB)	13	-1%	-7%	-15%	-30%	ToT (Wage/FB)	21	0%	-14%	-16%	-13%	
Food Basket	25,778	2%	12%	12%	12%	Food Basket	30,917	1%	7%	18%	29%	Food Basket	26,195	0%	16%	20%	15%	
SMEB	118,300	-1%	8%	13%	12%	SMEB	141,875	1%	7%	16%	23%	SMEB	128,319	0%	18%	21%	22%	
Kirkuk	Beans (white)	2,500	-2%	-11%	-11%	-17%	Beans (white)	2,250	2%	20%	0%	-10%	Beans (white)	2,500	0%	0%	0%	0%
	Bread (khoboz)	166	-8%	0%	-17%	0%	Bread (khoboz)	170	2%	13%	13%	13%	Bread (khoboz)	143	0%	0%	0%	14%
	Bulgur	1,500	0%	0%	0%	0%	Bulgur	1,500	0%	0%	0%	0%	Bulgur	1,250	0%	0%	0%	0%
	Cheese	8,000	0%	0%	0%	0%	Cheese	7,500	4%	7%	7%	0%	Cheese	6,000	0%	0%	-6%	-8%
	Chickpeas	3,000	0%	2%	2%	0%	Chickpeas	3,000	3%	20%	20%	20%	Chickpeas	2,500	0%	0%	0%	0%
	Dates	1,000	-44%	-47%	-41%	-50%	Dates	1,500	0%	0%	20%	50%	Dates	2,000	0%	0%	0%	33%
	Eggs	171	-12%	-15%	-15%	-15%	Eggs	225	-6%	13%	-10%	18%	Eggs	230	0%	0%	3%	15%
	Fish (fresh)	6,625	-4%	39%	39%	44%	Fish (fresh)	5,000	-2%	18%	43%	39%	Fish (fresh)	7,625	11%	53%	53%	91%
	Fuel (gas)	6,000	0%	0%	0%	0%	Fuel (gas)	7,000	0%	0%	0%	0%	Fuel (gas)	6,000	0%	0%	0%	0%
	Fuel (kerosene)	375	0%	0%	0%	0%	Fuel (kerosene)	200	0%	0%	0%	0%	Fuel (kerosene)	150	0%	0%	0%	0%
	Fuel (Super Petrol)	450	0%	0%	0%	-12%	Fuel (Super Petrol)	450	0%	0%	0%	0%	Fuel (Super Petrol)	450	0%	0%	0%	0%
	Lentils	2,500	4%	25%	43%	25%	Lentils	2,500	4%	67%	43%	25%	Lentils	2,500	2%	11%	67%	25%
	Meat (beef)	12,000	0%	0%	0%	0%	Meat (beef)	12,000	15%	20%	20%	20%	Meat (beef)	10,000	0%	0%	0%	0%
	Meat (chicken)	4,625	-4%	12%	9%	20%	Meat (chicken)	5,500	4%	6%	10%	-5%	Meat (chicken)	4,063	16%	8%	20%	29%
	Meat (lamb)	16,000	14%	14%	14%	14%	Meat (lamb)	13,500	5%	13%	13%	13%	Meat (lamb)	15,000	0%	0%	0%	0%
	Milk	2,000	0%	0%	0%	0%	Milk	1,500	0%	0%	0%	0%	Milk	1,500	0%	0%	0%	0%
	Milk (powder)	6,250	-2%	4%	14%	14%	Milk (powder)	6,875	7%	12%	12%	-14%	Milk (powder)	6,000	0%	9%	9%	9%
	Oil (vegetable)	3,563	3%	30%	30%	19%	Oil (vegetable)	2,750	2%	10%	10%	10%	Oil (vegetable)	3,250	0%	30%	30%	30%
	Onions	875	3%	17%	8%	59%	Onions	388	-18%	-23%	-11%	-8%	Onions	500	0%	0%	0%	0%
	Potatoes	1,000	3%	7%	23%	59%	Potatoes	1,000	0%	23%	33%	122%	Potatoes	813	16%	63%	63%	35%
Rice	2,000	-2%	0%	0%	-7%	Rice	2,375	8%	19%	19%	19%	Rice	1,750	0%	0%	0%	0%	
Salt (iodised)	750	0%	0%	0%	0%	Salt (iodised)	500	0%	0%	0%	0%	Salt (iodised)	1,000	0%	0%	0%	0%	
Sugar	1,250	4%	25%	25%	0%	Sugar	1,250	0%	0%	0%	14%	Sugar	1,250	4%	25%	25%	25%	
Tea	5,000	0%	0%	0%	0%	Tea	6,250	0%	1%	4%	4%	Tea	5,500	0%	0%	0%	0%	
Tomatoes	1,000	0%	7%	0%	5%	Tomatoes	938	34%	15%	7%	17%	Tomatoes	1,063	18%	89%	42%	42%	
Wage (casual labo)	25,000	0%	0%	0%	0%	Wage (casual lab)	25,000	0%	0%	0%	0%	Wage (casual labour)	25,000	0%	0%	0%	0%	
Wheat flour	900	-25%	6%	6%	20%	Wheat flour	1,300	1%	16%	30%	30%	Wheat flour	1,500	0%	0%	0%	0%	
ToT (Wage/WF)	28	33%	-6%	-5%	-17%	ToT (Wage/WF)	19	-1%	-13%	-23%	-23%	ToT (Wage/WF)	17	0%	0%	0%	0%	
ToT (Wage/FB)	20	7%	-9%	-9%	-8%	ToT (Wage/FB)	17	-4%	-15%	-17%	-14%	ToT (Wage/FB)	19	-2%	-6%	-10%	-9%	
Food Basket	27,448	-7%	9%	10%	9%	Food Basket	31,440	4%	17%	20%	17%	Food Basket	28,906	2%	6%	11%	9%	
SMEB	131,722	-6%	10%	12%	8%	SMEB	143,063	3%	18%	19%	18%	SMEB	143,838	1%	6%	12%	8%	
Karbala	Beans (white)	2,500	-2%	-11%	-11%	-17%	Beans (white)	2,250	2%	20%	0%	-10%	Beans (white)	2,500	0%	0%	0%	0%
	Bread (khoboz)	166	-8%	0%	-17%	0%	Bread (khoboz)	170	2%	13%	13%	13%	Bread (khoboz)	143	0%	0%	0%	14%
	Bulgur	1,500	0%	0%	0%	0%	Bulgur	1,500	0%	0%	0%	0%	Bulgur	1,250	0%	0%	0%	0%
	Cheese	8,000	0%	0%	0%	0%	Cheese	7,500	4%	7%	7%	0%	Cheese	6,000	0%	0%	-6%	-8%
	Chickpeas	3,000	0%	2%	2%	0%	Chickpeas	3,000	3%	20%	20%	20%	Chickpeas	2,500	0%	0%	0%	0%
	Dates	1,000	-44%	-47%	-41%	-50%	Dates	1,500	0%	0%	20%	50%	Dates	2,000	0%	0%	0%	33%
	Eggs	171	-12%	-15%	-15%	-15%	Eggs	225	-6%	13%	-10%	18%	Eggs	230	0%	0%	3%	15%
	Fish (fresh)	6,625	-4%	39%	39%	44%	Fish (fresh)	5,000	-2%	18%	43%	39%	Fish (fresh)	7,625	11%	53%	53%	91%
	Fuel (gas)	6,000	0%	0%	0%	0%	Fuel (gas)	7,000	0%	0%	0%	0%	Fuel (gas)	6,000	0%	0%	0%	0%
	Fuel (kerosene)	375	0%	0%	0%	0%	Fuel (kerosene)	200	0%	0%	0%	0%	Fuel (kerosene)	150	0%	0%	0%	0%
	Fuel (Super Petrol)	450	0%	0%	0%	-12%	Fuel (Super Petrol)	450	0%	0%	0%	0%	Fuel (Super Petrol)	450	0%	0%	0%	0%
	Lentils	2,500	4%	25%	43%	25%	Lentils	2,500	4%	67%	43%	25%	Lentils	2,500	2%	11%	67%	25%
	Meat (beef)	12,000	0%	0%	0%	0%	Meat (beef)	12,000	15%	20%	20%	20%	Meat (beef)	10,000	0%	0%	0%	0%
	Meat (chicken)	4,625	-4%	12%	9%	20%	Meat (chicken)	5,500	4%	6%	10%	-5%	Meat (chicken)	4,063	16%	8%	20%	29%
	Meat (lamb)	16,000	14%	14%	14%	14%	Meat (lamb)	13,500	5%	13%	13%	13%	Meat (lamb)	15,000	0%	0%	0%	

Annex 1: Market Prices by Governorates and Commodity

Governorate	Commodities	April	% Change from Previous period				Commodities	April	% Change from Previous period				Commodities	April	% Change from Previous period			
			1 M	3 M	6 M	1 Yr			1 M	3 M	6 M	1 Yr			1 M	3 M	6 M	1 Yr
Nainawa	Beans (white)	2,750	0%	10%	10%	10%	Beans (white)	2,500	0%	0%	0%	0%	Beans (white)	2,500	0%	0%	0%	0%
	Bread (khoboz)	200	11%	20%	20%	20%	Bread (khoboz)	213	-15%	-15%	6%	-11%	Bread (khoboz)	142	-6%	0%	0%	14%
	Bulgur	1,250	0%	0%	25%	25%	Bulgur	1,250	0%	0%	0%	0%	Bulgur	2,000	0%	0%	0%	0%
	Cheese	5,000	2%	3%	-9%	-17%	Cheese	4,000	0%	0%	-11%	-11%	Cheese	5,000	0%	0%	-17%	0%
	Chickpeas	3,000	0%	0%	14%	7%	Chickpeas	2,750	2%	10%	10%	10%	Chickpeas	3,000	0%	0%	0%	20%
	Dates	1,500	3%	20%	20%	15%	Dates	2,000	0%	0%	0%	0%	Dates	2,000	0%	0%	0%	33%
	Eggs	196	-7%	-6%	-16%	-9%	Eggs	162	-6%	-19%	-21%	-30%	Eggs	166	-17%	-17%	-29%	-16%
	Fish (fresh)	2,000	5%	33%	33%	33%	Fish (fresh)	6,500	0%	8%	44%	44%	Fish (fresh)	6,875	4%	20%	49%	53%
	Fuel (gas)	8,500	21%	6%	6%	21%	Fuel (gas)	7,000	0%	0%	0%	0%	Fuel (gas)	7,000	0%	0%	0%	0%
	Fuel (kerosene)	800	16%	7%	-9%	67%	Fuel (kerosene)	400	-20%	-20%	0%	-9%	Fuel (kerosene)	310	3%	15%	14%	14%
	Fuel (Super Petrol)	450	0%	0%	0%	0%	Fuel (Super Petrol)	450	0%	0%	0%	0%	Fuel (Super Petrol)	450	0%	0%	0%	0%
	Lentils	2,250	2%	38%	13%	13%	Lentils	2,000	0%	0%	33%	33%	Lentils	2,500	4%	25%	25%	25%
	Meat (beef)	10,500	-3%	5%	5%	5%	Meat (beef)	11,000	0%	0%	0%	0%	Meat (beef)	12,000	3%	17%	20%	20%
	Meat (chicken)	3,438	7%	0%	-2%	-12%	Meat (chicken)	5,000	0%	0%	0%	0%	Meat (chicken)	3,938	-6%	-1%	1%	-5%
	Meat (lamb)	12,500	-2%	4%	1%	4%	Meat (lamb)	15,000	7%	7%	7%	15%	Meat (lamb)	15,000	0%	0%	0%	0%
	Milk	1,000	0%	0%	0%	0%	Milk	1,875	25%	25%	25%	25%	Milk	1,250	0%	0%	0%	0%
	Milk (powder)	7,000	0%	0%	0%	0%	Milk (powder)	7,250	-9%	-9%	16%	45%	Milk (powder)	11,000	4%	10%	10%	10%
	Oil (vegetable)	3,500	1%	27%	37%	21%	Oil (vegetable)	3,188	3%	6%	6%	6%	Oil (vegetable)	3,500	4%	56%	56%	17%
	Onions	525	-19%	5%	-2%	75%	Onions	563	-25%	-10%	-25%	-25%	Onions	688	-2%	0%	10%	38%
	Potatoes	813	25%	44%	44%	50%	Potatoes	813	2%	63%	8%	48%	Potatoes	1,063	-11%	31%	42%	42%
	Rice	2,250	0%	13%	13%	13%	Rice	2,000	3%	14%	14%	21%	Rice	1,500	0%	0%	0%	-3%
	Salt (iodised)	750	0%	0%	0%	0%	Salt (iodised)	750	-6%	-25%	-25%	-25%	Salt (iodised)	1,000	0%	0%	0%	0%
	Sugar	1,250	4%	0%	0%	25%	Sugar	1,375	-2%	38%	38%	38%	Sugar	1,250	0%	0%	0%	19%
Tea	7,000	0%	0%	0%	-7%	Tea	7,000	0%	0%	17%	17%	Tea	6,000	0%	0%	0%	0%	
Tomatoes	875	-13%	56%	56%	25%	Tomatoes	813	2%	8%	18%	-23%	Tomatoes	1,063	33%	42%	31%	-3%	
Wage (casual labo)	15,000	0%	0%	0%	0%	Wage (casual labo)	20,000	0%	0%	0%	0%	Wage (casual labour)	25,000	0%	0%	0%	0%	
Wheat flour	1,250	0%	25%	25%	32%	Wheat flour	1,750	0%	0%	75%	17%	Wheat flour	838	-6%	8%	6%	-16%	
ToT (Wage/WF)	12	0%	-20%	-20%	-24%	ToT (Wage/WF)	11	0%	0%	-43%	-14%	ToT (Wage/WF)	30	6%	-7%	-6%	19%	
ToT (Wage/FB)	11	-2%	-15%	-14%	-13%	ToT (Wage/FB)	14	-1%	-6%	-21%	-14%	ToT (Wage/FB)	23	2%	-9%	-9%	0%	
Food Basket	28,946	2%	17%	16%	15%	Food Basket	31,999	1%	6%	27%	16%	Food Basket	24,007	-2%	10%	10%	0%	
SMEB	143,138	1%	17%	16%	17%	SMEB	152,141	1%	4%	29%	16%	SMEB	126,950	0%	10%	10%	1%	
Cadiisiya	Beans (white)	2,500	0%	0%	11%	0%	Beans (white)	2,250	-4%	-5%	0%	13%	Beans (white)	3,000	2%	9%	7%	5%
	Bread (khoboz)	200	3%	29%	20%	40%	Bread (khoboz)	125	0%	0%	0%	0%	Bread (khoboz)	143	0%	-4%	1%	1%
	Bulgur	1,500	0%	0%	9%	20%	Bulgur	1,000	0%	0%	0%	0%	Bulgur	2,125	12%	31%	42%	37%
	Cheese	6,000	0%	0%	2%	0%	Cheese	4,500	2%	9%	13%	-2%	Cheese	4,250	1%	6%	6%	-15%
	Chickpeas	3,000	3%	20%	20%	20%	Chickpeas	2,500	0%	0%	0%	0%	Chickpeas	3,000	2%	9%	0%	11%
	Dates	2,500	0%	0%	11%	0%	Dates	2,375	-5%	-5%	12%	-5%	Dates	2,000	0%	0%	0%	0%
	Eggs	188	-12%	-17%	-19%	-6%	Eggs	178	-1%	0%	-3%	-1%	Eggs	216	0%	0%	0%	8%
	Fish (fresh)	7,375	13%	28%	87%	76%	Fish (fresh)	5,250	5%	8%	17%	22%	Fish (fresh)	5,875	5%	7%	4%	34%
	Fuel (gas)	6,000	0%	0%	0%	0%	Fuel (gas)	8,500	-7%	0%	0%	0%	Fuel (gas)	6,000	0%	-27%	0%	0%
	Fuel (kerosene)	165	0%	-22%	0%	-4%	Fuel (kerosene)	1,000	4%	18%	40%	66%	Fuel (kerosene)	300	-6%	-40%	0%	0%
	Fuel (Super Petrol)	450	0%	0%	0%	0%	Fuel (Super Petrol)	1,081	1%	11%	14%	64%	Fuel (Super Petrol)	450	0%	0%	0%	0%
	Lentils	2,500	2%	25%	43%	28%	Lentils	1,200	0%	-2%	0%	20%	Lentils	2,313	22%	42%	42%	32%
	Meat (beef)	11,250	6%	13%	13%	13%	Meat (beef)	16,000	4%	7%	7%	7%	Meat (beef)	11,000	0%	0%	0%	0%
	Meat (chicken)	4,250	2%	11%	17%	0%	Meat (chicken)	3,625	2%	5%	-11%	-6%	Meat (chicken)	6,500	7%	8%	4%	48%
	Meat (lamb)	13,250	5%	10%	10%	10%	Meat (lamb)	16,000	4%	7%	7%	7%	Meat (lamb)	14,000	0%	0%	0%	0%
	Milk	1,750	0%	0%	0%	0%	Milk	1,250	0%	0%	0%	0%	Milk	1,000	0%	0%	0%	0%
	Milk (powder)	6,000	0%	0%	0%	0%	Milk (powder)	5,000	6%	5%	11%	2%	Milk (powder)	5,000	0%	0%	0%	0%
	Oil (vegetable)	3,500	-1%	27%	27%	27%	Oil (vegetable)	4,000	5%	42%	45%	54%	Oil (vegetable)	3,500	11%	27%	27%	27%
	Onions	500	0%	-11%	-11%	0%	Onions	1,000	0%	0%	0%	0%	Onions	875	17%	17%	17%	17%
	Potatoes	1,063	-3%	55%	42%	63%	Potatoes	1,000	0%	0%	0%	0%	Potatoes	1,125	50%	29%	50%	41%
	Rice	2,250	5%	13%	13%	13%	Rice	2,150	13%	47%	55%	78%	Rice	2,000	3%	14%	14%	14%
	Salt (iodised)	750	-29%	0%	0%	0%	Salt (iodised)	500	0%	0%	0%	0%	Salt (iodised)	1,250	0%	0%	0%	0%
	Sugar	1,250	0%	0%	0%	19%	Sugar	1,625	31%	48%	48%	48%	Sugar	1,300	2%	4%	4%	30%
Tea	6,000	0%	0%	0%	0%	Tea	8,500	0%	0%	0%	6%	Tea	5,000	0%	0%	0%	0%	
Tomatoes	1,000	25%	45%	28%	18%	Tomatoes	1,250	0%	0%	0%	25%	Tomatoes	1,563	56%	67%	56%	95%	
Wage (casual labo)	25,000	0%	0%	0%	0%	Wage (casual labo)	25,000	0%	3%	14%	0%	Wage (casual labour)	18,000	7%	-8%	0%	3%	
Wheat flour	840	1%	8%	17%	20%	Wheat flour	1,238	-1%	3%	-4%	37%	Wheat flour	1,009	0%	0%	1%	1%	
ToT (Wage/WF)	30	-1%	-7%	-14%	-17%	ToT (Wage/WF)	20	1%	0%	18%	-27%	ToT (Wage/WF)	18	7%	-8%	-1%	3%	
ToT (Wage/FB)	20	-2%	-12%	-15%	-14%	ToT (Wage/FB)	20	-6%	-15%	-4%	-29%	ToT (Wage/FB)	13	1%	-18%	-11%	-14%	
Food Basket	27,848	2%	14%	18%	16%	Food Basket	28,174	6%	22%	18%	40%	Food Basket	29,433	6%	13%	12%	20%	
SMEB	133,038	1%	12%	17%	15%	SMEB	126,613	5%	18%	17%	39%	SMEB	135,983	6%	14%	15%	15%	

